



# *Standards Development Organizations Collaborating on Global Effort on the IPS*

Session #111, March 16, 2022

Suzy Roy

Customer Relations Manager Americas  
SNOMED International

**HIMSS** 22

**SNOMED**  
International

DISCLAIMER: The views and opinions expressed in this presentation are solely those of the author/presenter and do not necessarily represent any policy or position of HIMSS.

# Welcome



**John D'Amore, MS**  
*Advocate for International Patient Summary  
HL7 International*



**Suzy Roy**  
*Customer Relations Manager Americas  
SNOMED International*

# *Conflict of Interest*

John D'Amore – Has no real or apparent conflicts of interest to report.

Suzy Roy - Has no real or apparent conflicts of interest to report.

# Agenda

- **International Patient Summary (IPS)**
- **HL7 International**
  - About HL7 International
  - HL7 FHIR IPS Standards
- **SNOMED International**
  - About SNOMED International
  - About SNOMED CT
  - SNOMED IPS resources
- **Collaboration for IPS**
  - HL7 FHIR and SNOMED CT
  - Use case examples
- **Discussion with audience**

# *Learning Objectives*

- Discuss the roles of HL7 International in providing data structure standards and SNOMED International in providing terminology standards, and how both contribute to development and implementation of the IPS standard specifications
- Recognize how the value sets defined in the IPS templates and profiles and the SNOMED CT GPS and IPS reference set can be used in IPS adoption and implementation
- Identify ways in which HL7 International and SNOMED International can continue to improve resources such as the IPS FHIR IG and SNOMED CT and IPS reference set to enhance implementation efforts and facilitate more effective IPS implementations

# ***International Patient Summary***

## About

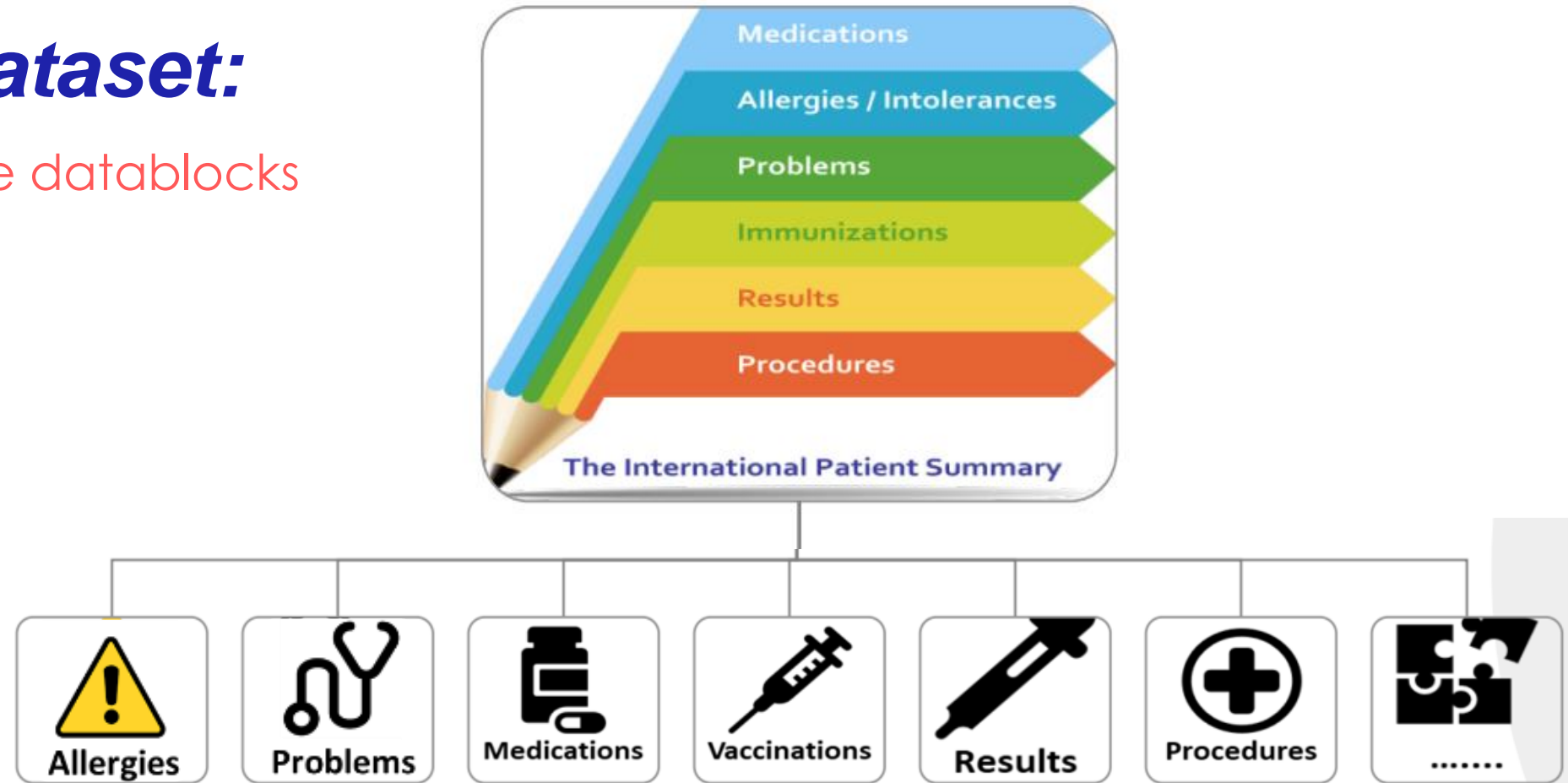
- A standardized set of basic clinical data
- Includes most important health and care related facts
- A summarized version of a patient's clinical data provides health professionals the essential information needed for care



**The International Patient Summary is a minimal and non-exhaustive set of basic clinical data of a patient, specialty-agnostic, condition-independent, but readily usable by all clinicians for the unscheduled (cross-border) patient care.**

# *The IPS Dataset:*

A set of reusable datablocks



A 'document' with 'sections'....

# The IPS

## An extensible reference data model

- New Data Requirements
  - The IPS should cover all ages
  - Implicit, existing IPS workflows need to be made explicit
  - Alerts & risks; Patient story; Family Hx
- New Workflows
  - Summary production
  - Summary consumption
- New Cases
  - Rare diseases, chronic conditions, pandemics...
- Safe-guarding Summary users
  - Reducing clinical burden through effective governance, consistency and coherence
  - Promote trust and relevance assessment
  - Design in usability





provide guidance for EU

eHN EU PS  
Guideline

refine

CEN  
EN 17269

CEN  
TS 17288

refer

## IPS Global Standards and Specifications

supersede

align

ISO 27269

implement

implement

use

use

HL7  
IPS CDA IG

HL7  
IPS FHIR IG

IHE IPS Profile

refer

refer



# ***HL7 International***

## About

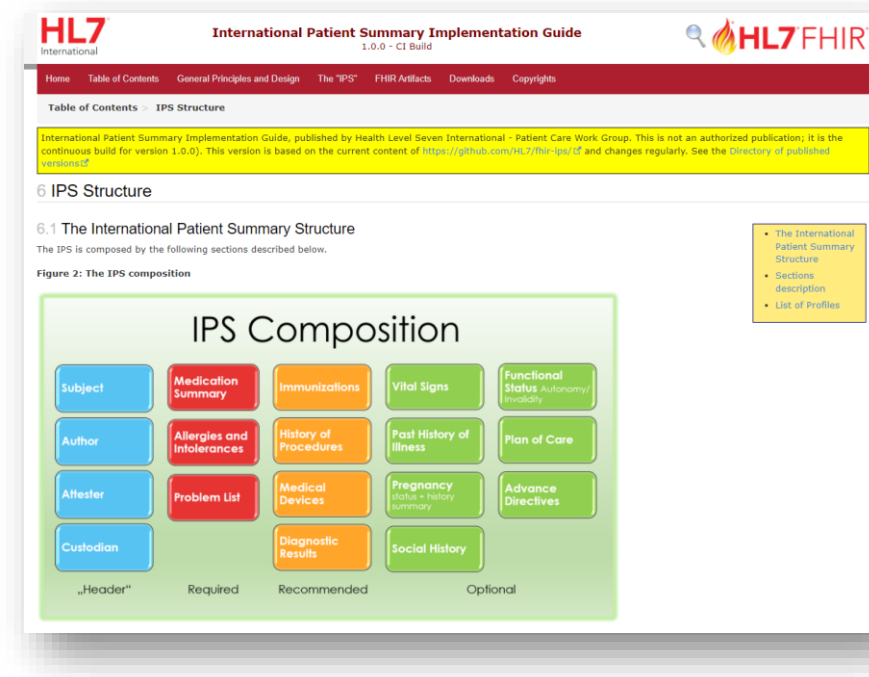
Founded in 1987, Health Level Seven International (HL7) is a not-for-profit, ANSI-accredited standards developing organization dedicated to providing a comprehensive framework and related standards for the exchange, integration, sharing, and retrieval of electronic health information that supports clinical practice and the management, delivery and evaluation of health services. HL7 is supported by more than 1,600 members from over 50 countries, including 500+ corporate members representing healthcare providers, government stakeholders, payers, pharmaceutical companies, vendors/suppliers, and consulting firms.

# The IPS in HL7<sup>®</sup> FHIR<sup>®</sup>

A care summary using the Composition Resource

Published: <https://hl7.org/fhir/uv/ips/>

Current: <http://build.fhir.org/ig/HL7/fhir-ips/>



## Bundle

- **Composition (1)**
- Patient (1)
- Practitioner (\*)
- Organization (\*)
- AllergyIntolerance (\*)
- MedicationRequest(\*)
- MedicationStatement(\*)
- Condition (\*)
- Immunization (\*)
- Observation (\*)
- Other Resources (\*)

## Composition

Elements that describe the document (id, language, text, etc.)

**Subject of the IPS**

**Author of the IPS**

Clinical Services of IPS

**Sections of the IPS**

- Narrative Text
- Resource References

# A Global Need for Terminology

Structured, coded data are more usable, translatable and easy to integrate



**SNOMED**  
**736031006**



**“Oyster”**

Allergies and Intolerancies

allergy - medication - Criticality: undefined

Quinolones (-)

allergy - food - Criticality: undefined

生蠔 (-)



# *SNOMED International*

## **Our Mission**

SNOMED International sustainably produces a global clinical vocabulary and other services that enables the clear exchange and analysis of health information for all

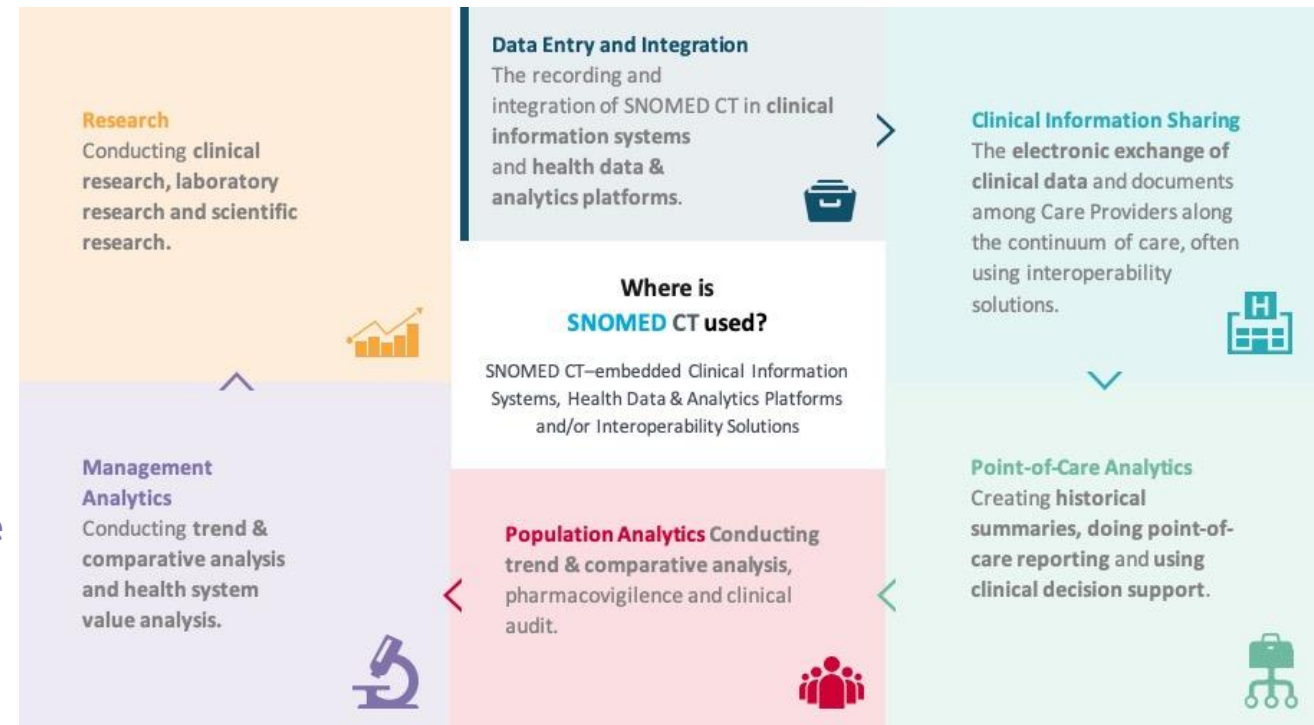
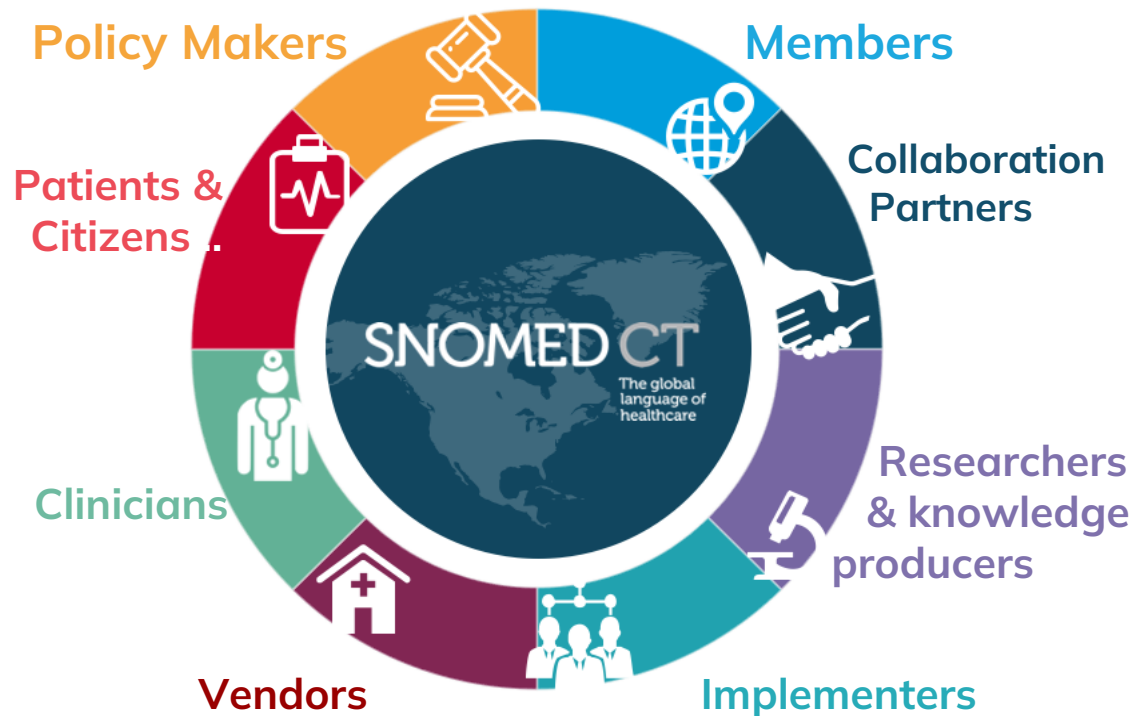
## **Our Vision**

By 2025, Clinical Terminologies will be used globally, which will result in better health and improved patient outcomes, supported by one language of health.

# SNOMED CT

Who uses SNOMED CT and how

“ Encoding health information with standards such as SNOMED CT is critical for frontline service delivery, pandemic surveillance, and retrospective data analysis.

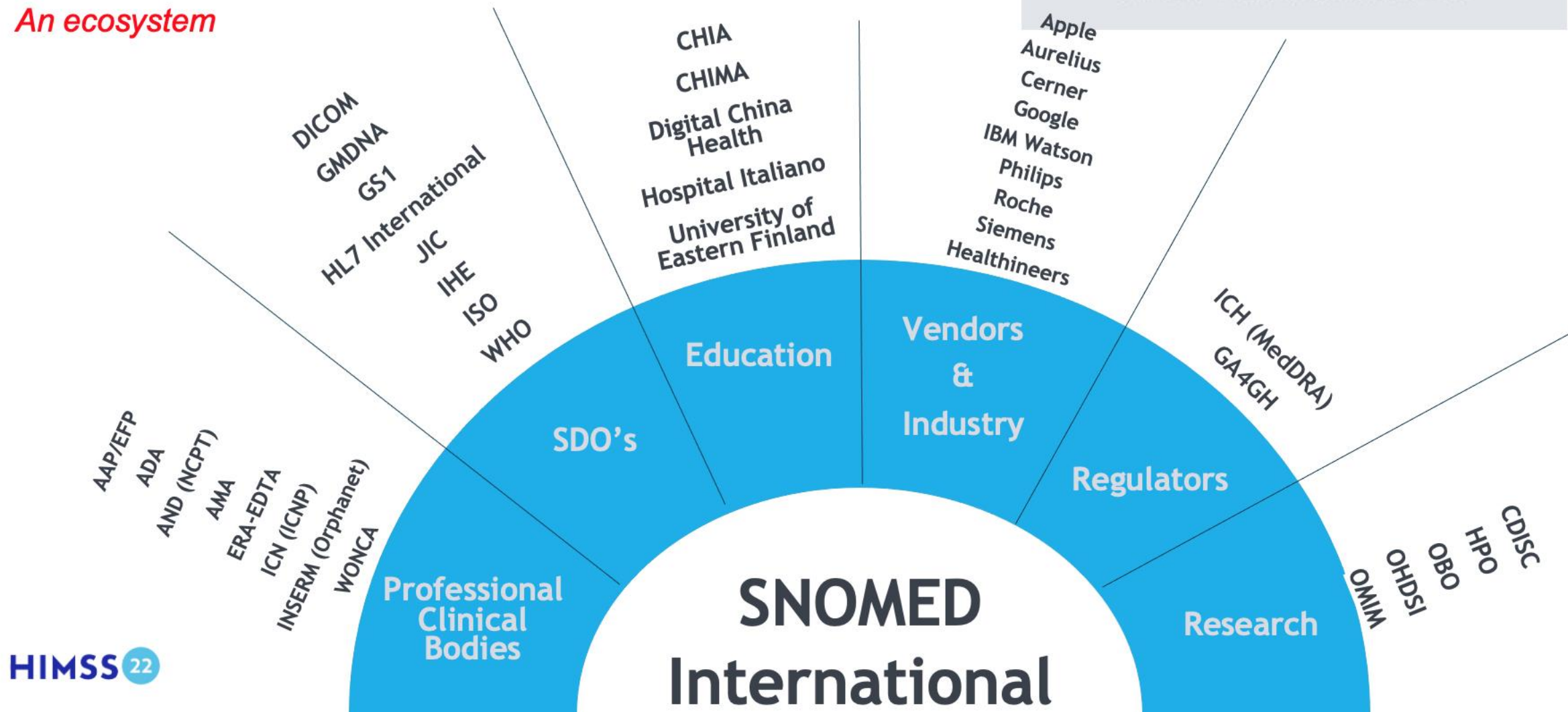




# International Collaboration

*An ecosystem*

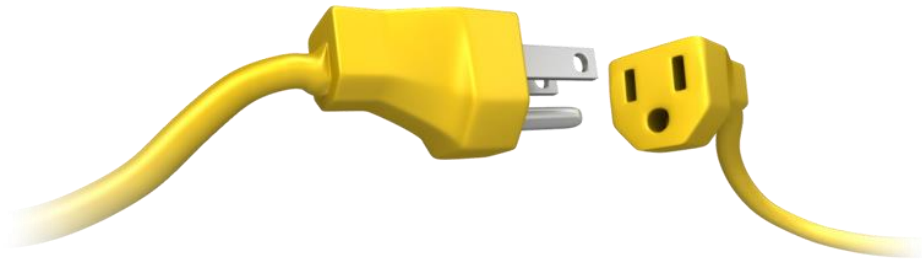
SNOMED International has an active program of partnerships with international standards development organizations, professional clinical bodies and commercial organizations.



# Electronic Health Records

## Making health records electronic...

- Is a significant step forward
- Improves communication
- Increases availability of relevant information



... but this is only a partial solution; the real challenge is ...

## Making health records meaningful

- Identifying significant facts in oceans of data
- Enabling effective meaning-based retrieval
- Linking the EHR to authoritative clinical knowledge



***SNOMED CT represents clinical meanings and contributes to meaningful health records***



# *SNOMED CT for IPS*

## Freely available resources

**SNOMED CT IPS Reference Set** a freely available set of SNOMED CT terms that are harmonized with and supports the contents of the HL7 International Patient Summary and artifacts and CEN's European Standard for the Patient Summary value sets

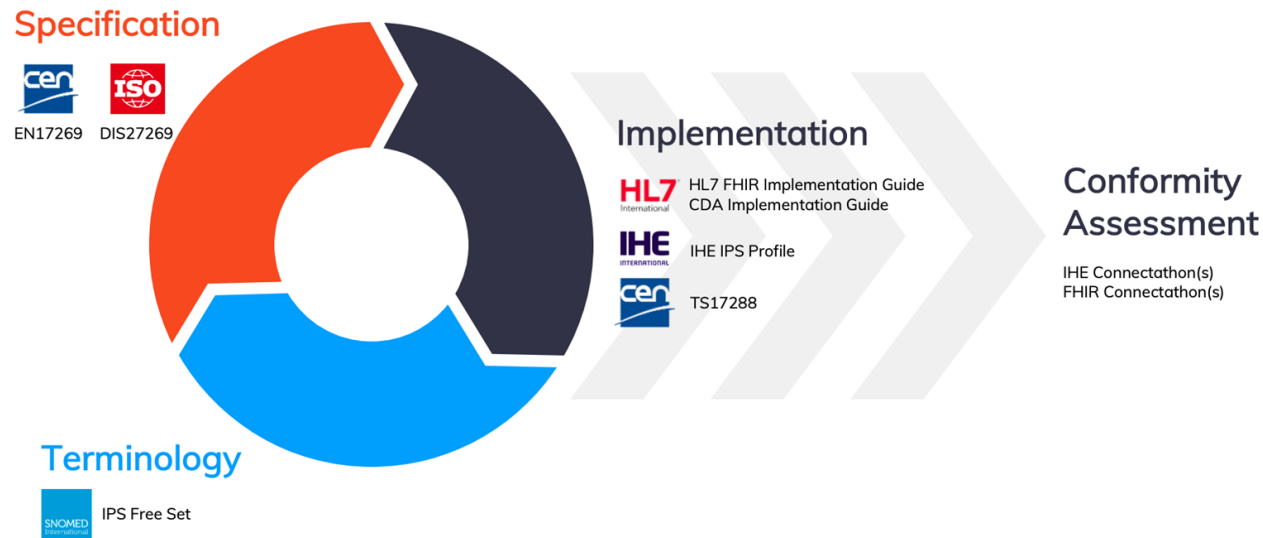
**SNOMED Global Patient Set (GPS)** a managed list of existing SNOMED CT unique concept identifiers and their associated descriptions available to all users at no cost via the Creative Commons Attribution 4.0 International Public License. Includes all IPS terminology content

**\*\*COMING SOON\*\* IPS Terminology** newly announced SNOMED CT resource to provide implementers with an open product that can be used in healthcare solutions using the power of SNOMED CT through its query language and hierarchies. The IPS sub-ontology will allow for more effective use of clinical data analytics and decision support, and for Artificial Intelligence applications to extend beyond IPS data capture and sharing

# Why standards are important

## Reference terminology for semantic interoperability

- Clinical ideas comprise everything we think we know about health, illness, prevention, investigation and treatment
  - Clinical ideas are the building blocks of personal health records
- Having a standard terminology allows for the set of concepts (clinical ideas) to be based on a common reference point
  - Allows for exchange, comparisons and aggregation of data



# *HL7 & SNOMED CT for IPS*

A flexible and extensible process

- New IPS content added to SNOMED CT
  - Managed via SNOMED International - HL7 International collaboration
  - HL7 International collaborates with CEN and IPS needs
    - submits new content requests to SNOMED International
  - SNOMED International adds new content to SNOMED CT and creates SNOMED CT artifacts for IPS adoption and implementation
    - HL7 IPS SNOMED CT Freeset is produced annually
    - Packaged and released as GPS annually (September)
    - New SNOMED IPS sub-ontology based on IPS SNOMED CT Freeset

# HL7 FHIR Profile: Procedure

This profile represents the constraints applied to the Procedure resource by the IPS project, which specifies an entry of the History of Procedure for the international patient summary based on the FHIR standard R4.

The Procedures-IPS value set is defined using a logical definition, consisting of the following inclusion and exclusion clauses:

- Include codes from <http://snomed.info/sct> where concept descends from 71388002 (Procedure)
- Exclude codes from <http://snomed.info/sct> where concept is-a 14734007 (Administrative procedure)
- Exclude codes from <http://snomed.info/sct> where concept is-a 59524001 (Blood bank procedure)
- Exclude codes from <http://snomed.info/sct> where concept is-a 389067005 (Community health procedure (procedure))
- Exclude codes from <http://snomed.info/sct> where concept is-a 442006003 (Determination of information related to transfusion)
- Exclude codes from <http://snomed.info/sct> where concept is-a 225288009 (Environmental care procedure)
- Exclude codes from <http://snomed.info/sct> where concept is-a 308335008 (Patient encounter procedure)
- Exclude codes from <http://snomed.info/sct> where concept is-a 710135002 (Promotion (procedure))
- Exclude codes from <http://snomed.info/sct> where concept is-a 389084004 (Staff related procedure (procedure))

<http://hl7.org/fhir/uv/ips/StructureDefinition/Procedure-uv-ips>

# SNOMED CT Expression Constraint (ECL) query

SNOMED CT International Edition Release or IPS Terminology

```
< 71388002 |Procedure|  
  MINUS (< 14734007 |Administrative procedure|  
    OR < 59524001 |Blood bank procedure|  
    OR < 389067005 |Community health procedure|  
    OR < 442006003 |Determination of information related to transfusion|  
    OR < 225288009 |Environmental care procedure|  
    OR < 308335008 |Patient encounter procedure|  
    OR < 710135002 |Promotion|  
    OR < 389084004 |Staff related procedure| )
```

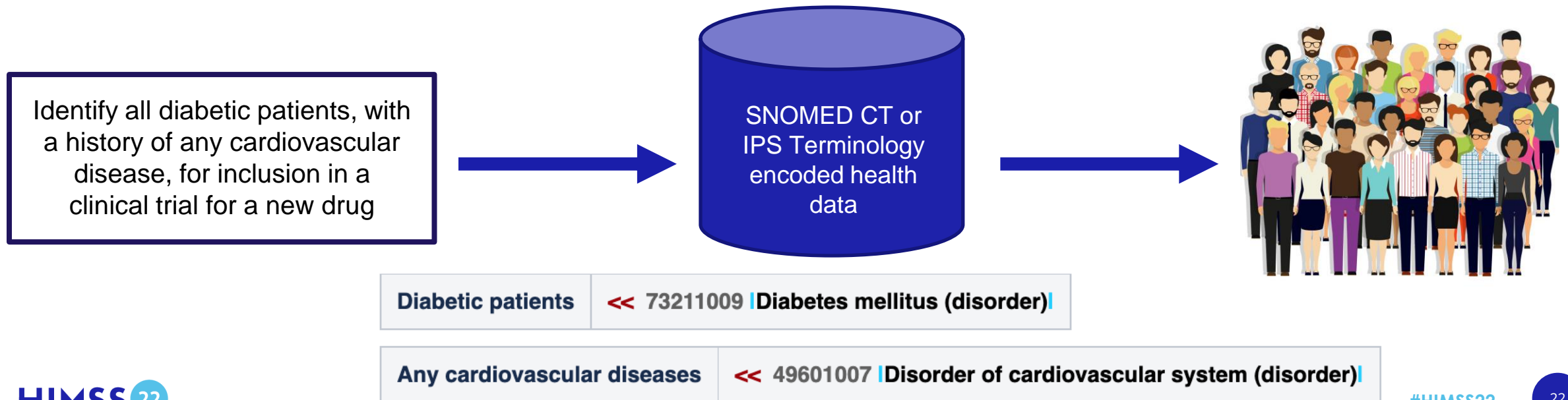
ECL expression can be submitted to a terminology server via a standard [HL7 FHIR Terminology Services API](https://hl7.org/fhir/uv/ips/StructureDefinition/Procedure-uv-ips), to extract the SNOMED CT concepts that may be used in the HL7 Procedures-IPS value set

<http://hl7.org/fhir/uv/ips/StructureDefinition/Procedure-uv-ips>

# Use Case Examples

## Sharing and analyzing IPS data

- Receiving Data
- Sending Data
- Using IPS Terminology data for analytics



## *Questions & Discussion*



Learn more about IPS at:

<https://international-patient-summary.net/>

*Thank you!*



**Suzy Roy**

SNOMED International  
[sro@snomed.org](mailto:sro@snomed.org)



**John D'Amore, MS**

HL7 International (contractor)  
[johnd@moreinformatics.com](mailto:johnd@moreinformatics.com)